



RAYMOND ROADRUNNER

TOWN OF RAYMOND - AUGUST 2020 NEWSLETTER

Update on fiscal year end



By Finance Director, Cathy Ricker

The Town of Raymond closed its books for the year on June 30, 2020. Most towns in Maine have a fiscal year that ends in June, which coincides with the State of Maine. It shortens the time between the establishment of taxable value of the town and the commitment of taxes, and eliminates the need for tax anticipation borrowing.

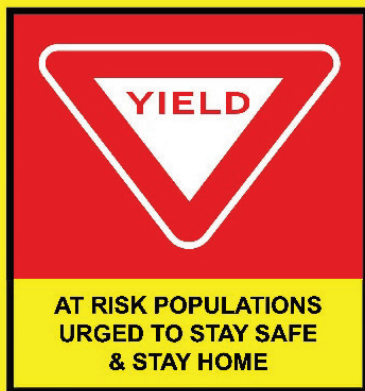
The Town of Raymond does not rely heavily on fees to support its annual budget, so the unexpected downturn in the economy this spring did not impact the town in a major way. In total, revenue collected exceeded the projected budget.

Taxes for the current year we expect will be committed in September, with the normal due date for the first half of October 31, 2020.



PROCEED WITH CAUTION

CONTROL THE SPREAD OF COVID-19



THE TOWN OF RAYMOND WOULD LIKE TO RECOGNIZE EVERYONE WHO HAS DONATED TO THE BACKPACK PROGRAM OVER THE SUMMER
(list updated as of August 7th, 2020).

Your generosity and the generosity of others before you have helped many families over the summer gain access to much needed grocery items!

- ☺ Paul & Georgette Ouellette ☺ Martha Morrison
- ☺ Lori & Daniel Lambert ☺ Suzanne & Joseph Bruno
- ☺ Raymond Village Community Church
- ☺ Leroy Lindell ☺ David O'Connell ☺ Janis Cummings
- ☺ Lisa Friedlander & Thomas Cloutier ☺ Margaret Jones
- ☺ Robert & Nancy Yates ☺ Dean & Kelly Wilson
- ☺ Edward & Linda Kranich ☺ Susan & Steven Bracket
- ☺ Lynne Latham-Estey ☺ Speedy Stop Land Holdings
- ☺ Deborah & Timothy Tarr ☺ Alan & Jane Ellen Stone
- ☺ Paul Cullinan & Margaret Burby ☺ Louise Lester
- ☺ Bruce & Gail Small ☺ Ken, Caleb & Rebecca Sayward

Generous Donor Gives Hannaford Gift Cards to the Raymond Community Assistance Fund

Covid-19 has had vast effects on many people and the toll it is taking on daily life is undeniable. However, for all the disruption it is has caused, coronavirus has also brought people together. Many mobilized quickly to help those in need. Communities banded together to help each other out through volunteering, donations or by simply checking in.

Barry MacKay is among those who wanted to help. As Covid-19 shut down businesses, Barry knew that there must be people in need. From the business owners to the employees, too many were thrust into an uncertain world. "I figured I could pay it forward. I know how fortunate I am, and that others have not been so fortunate, said MacKay. "I picked up some Hannaford gift cards and gave them to the Town of Raymond to be

given out to those who needed them." When I spoke to him earlier this month he explained that he doesn't have a lot of spare time for volunteerism, so he figured the Hannaford gift cards was the best way that he could help and make the most difference in people's lives. "When I received my next paycheck, I went back to Hannaford and picked up some more and I continued to do that over the course of the summer," explained MacKay.

MacKay has donated \$1,500 worth of gift cards to the Town of Raymond, which have been distributed by the General Assistance Administrator, Jenny Silverblade. "The cards are being given to people who apply for general assistance, the elderly and those in need" explained Silverblade.

Thank you for your generosity, Barry MacKay!

A "THANK YOU" FROM TOWN MANAGER DON WILLARD AND THE RAYMOND SELECTBOARD

We want to take this opportunity to thank all our citizens and patrons for you continued understanding and cooperation as we work together to address the serious health threats associated with the global Coronavirus (COVID-19) pandemic. By following CDC recommended and town adopted health and safety protocols, we can help slow the spread of the virus.

Your willingness to join this effort has not gone unnoticed and is greatly appreciated. We would also like to thank our dedicated town employees for their ongoing service at this challenging time.

Raymond Village Library Library UPDATES AND NEWS



Raymond Village Library

An Open Door ~ Discover the Possibilities

The new garden path story walk is ready for visitors!

Drop by the Community Garden next to the library, explore the Children's Garden and enjoy an outdoor story walk.

Read Jack and the Beanstalk, and see how many plants and vegetables you can recognize.

Also check out their backpack assortment filled with lots of fun things to do, and lots of great books to read!

Stop by the library to see the entire selection of 19 different themes!

FOLLOW THE LIBRARY ON FACEBOOK FOR MORE PROGRAMS AND EVENTS

VOLUNTEERS

Meals on Wheels Needs You!

Many of the new volunteers who stepped up over the last few months to deliver meals have gone back to work.

So, all of Maine's area agencies on aging need your help!

Please get the word out that we need volunteers to deliver meals to older people who cannot prepare meals for themselves.

FMI, including contact information, visit Southern Maine Agency on Aging at <https://www.smaaa.org/wellness/meals.html> or

<https://www.smaaa.org/volunteer/newvolunteers.html>



Been missing the Raymond Village Community Church Pot Roast Suppers?
Join them for take-out this Saturday, Aug. 22nd

Same good food, pot roast and gravy, potatoes, green beans, carrots, a roll, and a brownie for \$10. **Meals are take out only.**

They're taking orders for meals for pick up between 5:00 and 6:30PM August 22nd. They will be hot and ready to take home!

To order your meals please call the RVCC office at 655-7749 and press #2 to leave a message with your name, number of meals and time you will pick up. Or if you prefer you can send an e-mail to: office@rvccme.org with the information.



Institute for Integrative Aging
St. Joes is still offering many programs via Zoom

★ BOOK CLUB

Read and discuss a new book each month with meetings via Zoom.

★ UKULELE ONLINE

All ages & ability levels. Twice a month on Wednesdays 6pm – 7pm

★ SILVER SNEAKERS ONLINE!

Monday, Wednesday, and Fridays at 11a.m.

★ COFFEE & CONVERSATION

Join staff, friends & a special guest Tuesdays 9am – 9:45am

Check out www.sjcme.edu/centers/institute-for-integrative-aging or email: iia@sjcme.edu for more info and to sign up. Not sure about Zoom meetings? They will help walk you through the process too!

WHERE IN RAYMOND: Tenny River



DID YOU know?

The
Fuller Center
for Housing
Sebago Lakes Region, ME

The Sebago Lakes Region Fuller Center for Housing is a new organization that performs housing repairs and rehabilitation focusing on keeping seniors safe and aging in place in their homes in Raymond, Standish and Windham. If you or someone you know is over 65, owns their own home and might not have the money or physical ability to do their own repairs take a look at this organization.

For more information visit www.sebagofullerhousing.org or call 207-387-0855. Volunteer opportunities also available.

REGISTER NOW FOR THEIR VIRTUAL BIKE RIDE SEPT. 12 - SEPT. 26

This virtual bike ride is 40 miles around Sebago Lake. \$35/rider Registrants will get a t-shirt and there will be prize drawings after the event! Register at: www.sebagofullerhousing.org

Greg Foster, Raymond resident and licensed forester

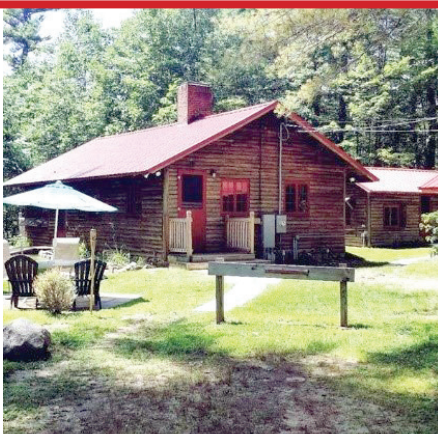
It is estimated that there are 80,000 non-industrial forest landowners in Maine. These people typically own between 10 and 1,000 acre properties, and are not primarily in the business of growing timber, as are industrial ownerships such as Irving, or Hancock Lumber. Approximately 35% of Maine's forest land is owned collectively by non-industrial type forest land owners. Being the largest ownership group of all the types, they are very significant in the world of forestry in Maine, as they supply the forest products manufacturing industry with just under ½ of the timber volume they need.

Like most towns in Maine, Raymond has many woodlots and many forest landowners. Most forest landowners generally are very gracious in allowing access. Provided the landowner's property is treated with respect, this land is likely to remain accessible. Illegal trash disposal (tires, furniture, etc.), and irresponsible use of ATV's often cause owners to post their property. If you happen to use private property or wish to contribute somehow in support of private landowners, visit <https://www.maine.gov/ifw/programs-resources/outdoor-partners-program/index.html> for more information.

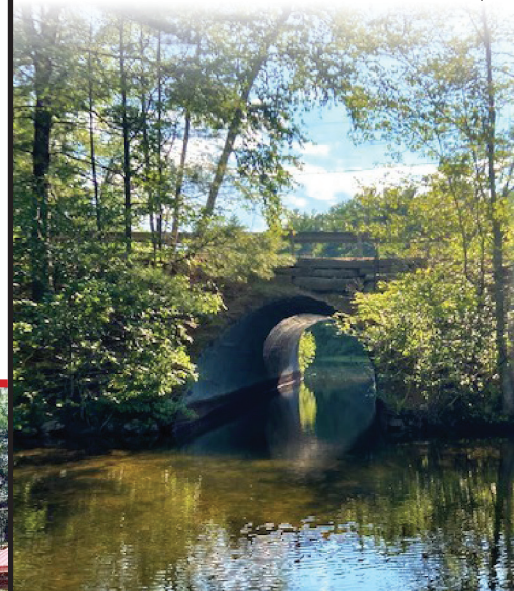
TASSEL
TOP
PUBLIC BEACH
TOWN OF RAYMOND

**TASSEL TOP
CABIN RENTAL
RESERVATIONS**
can now be made online at:
<https://raymond.recdesk.com/Community/Home>
For more information call:
207-655-4572

Follow Tassel Top on Facebook for updates!



Where IN RAYMOND?



This is a 1.0-mile-long navigable stream connecting Crescent Lake with Panther Pond and is part of the Presumpscot River watershed, flowing to Casco Bay, an arm of the Atlantic Ocean.

Photo by Kaela Gonzalez